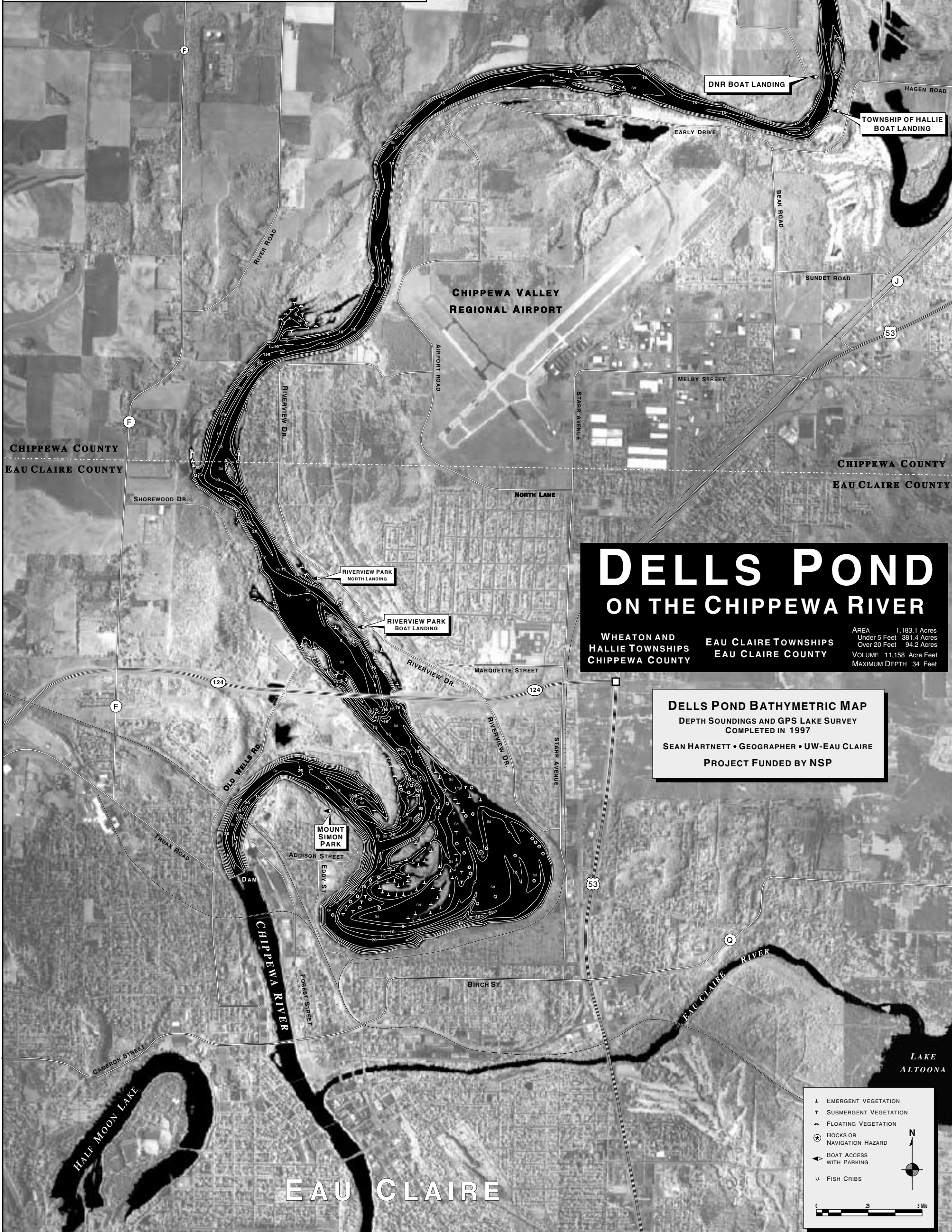
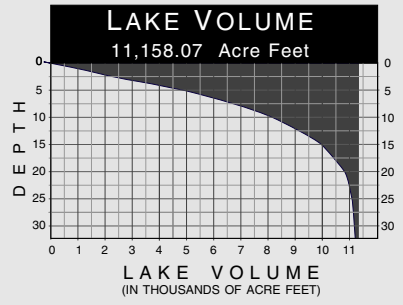
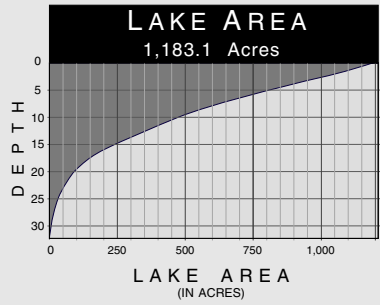


DELLS POND



**DELLS POND
ON THE CHIPPEWA RIVER**

WHEATON AND HALLIE TOWNSHIPS
CHIPPEWA COUNTY

EAU CLAIRE TOWNSHIPS
EAU CLAIRE COUNTY

AREA 1,183.1 Acres
Under 5 Feet 381.4 Acres
Over 20 Feet 94.2 Acres
VOLUME 11,158 Acre Feet
MAXIMUM DEPTH 34 Feet

DELLS POND BATHYMETRIC MAP
DEPTH SOUNDINGS AND GPS LAKE SURVEY
COMPLETED IN 1997

SEAN HARTNETT • GEOGRAPHER • UW-EAU CLAIRE
PROJECT FUNDED BY NSP

- ↓ EMERGENT VEGETATION
- † SUBMERGENT VEGETATION
- ⊕ FLOATING VEGETATION
- ⊙ ROCKS OR NAVIGATION HAZARD
- ↔ BOAT ACCESS WITH PARKING
- ⬇ FISH CRIBS

0 25 5 Miles

N

EAU CLAIRE