

Sections 26, 27, 34, 35
Alden Township
in Polk County

Sections 2 and 3
Star Prairie Township
in St. Croix County

CEDAR LAKE

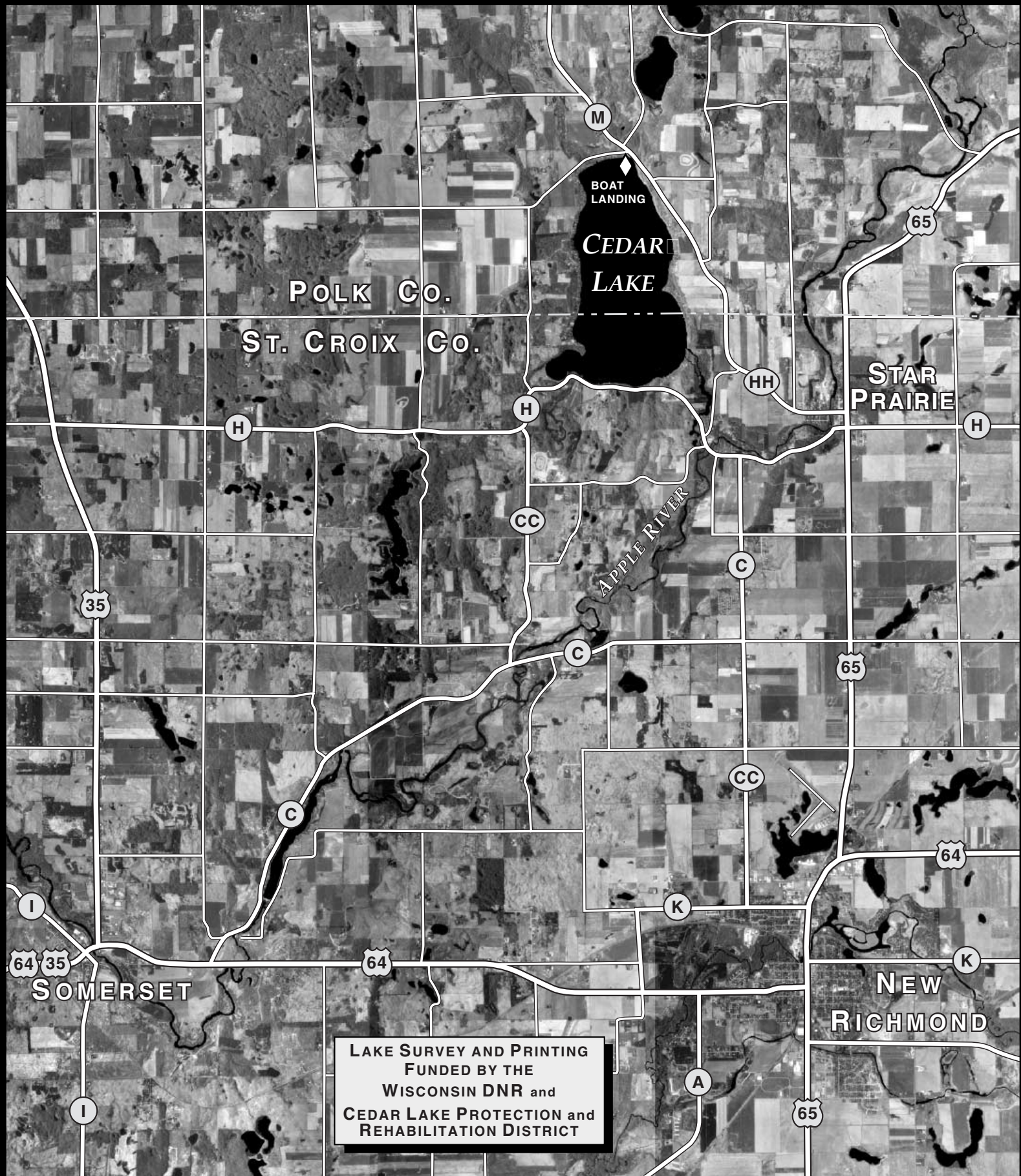
BATHYMETRIC MAP

1998 Survey Integrating Sonar with GPS

SEAN HARTNETT • GEOGRAPHER
UNIVERSITY OF WISCONSIN - EAU CLAIRE

AREA 1,117.6 Acres
Under 5 Feet 189.0 Acres
Over 20 Feet 675.9 Acres

VOLUME 20,448.1 Acre Feet
MAXIMUM DEPTH 34 Feet
SHORELINE 6.46 Miles



LAKE SURVEY AND PRINTING
FUNDED BY THE
WISCONSIN DNR and
CEDAR LAKE PROTECTION and
REHABILITATION DISTRICT