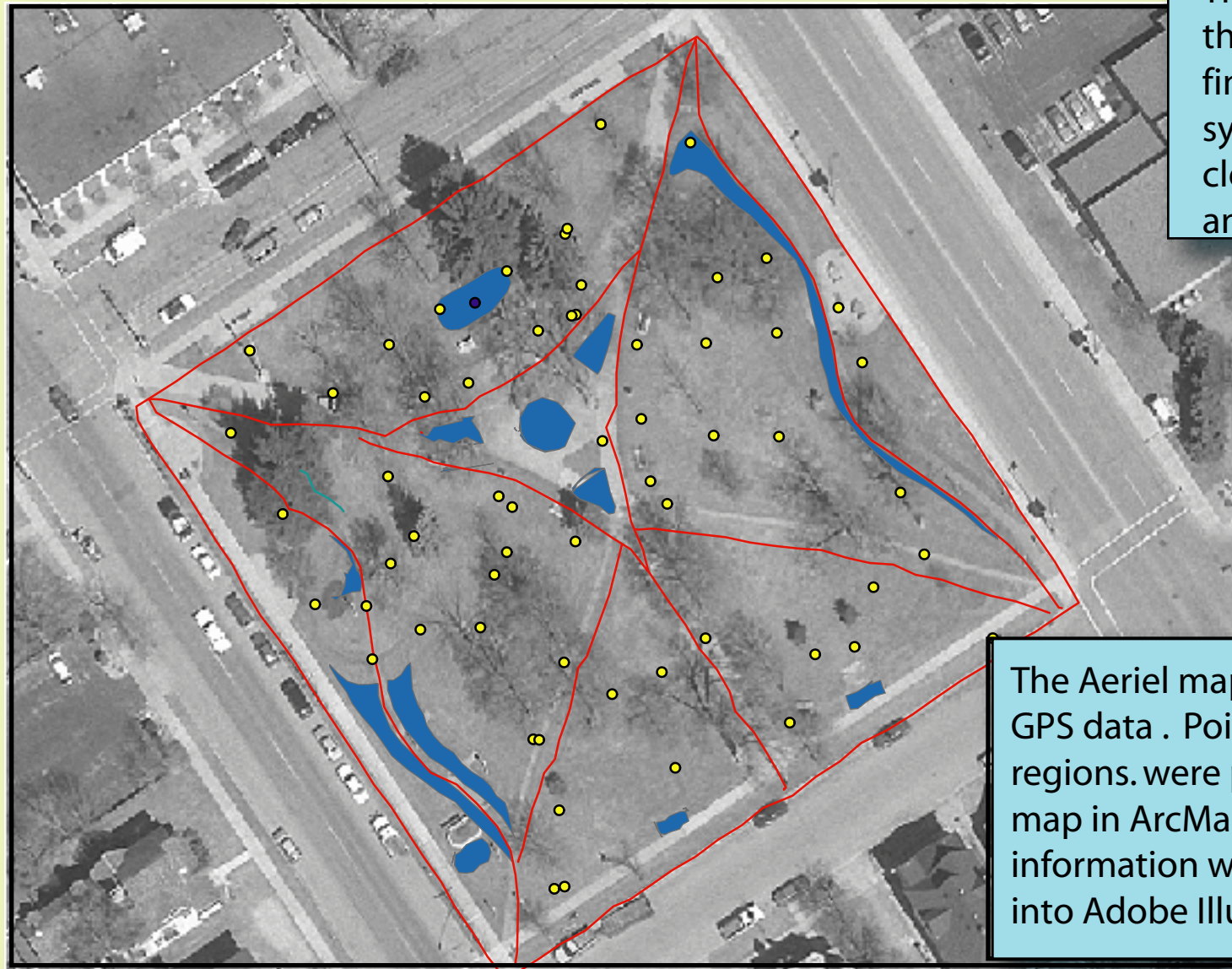


Wilson Park GPS Project

By: Becky Mossige and Guy L'Esperance Geog 199

After collecting our data of Wilson Park using the GPS, we downloaded it to a program on the computer called pathfinder. From there we were able to send our data to ArcMap GIS to find symbols and scale our map. From there we exported our map from ArcMap to Adobe Illustrator to finish the poster. In Adobe Illustrator we were able to straighten lines, fix circles, and finally place shadows behind the maps and text boxes for visual effects.

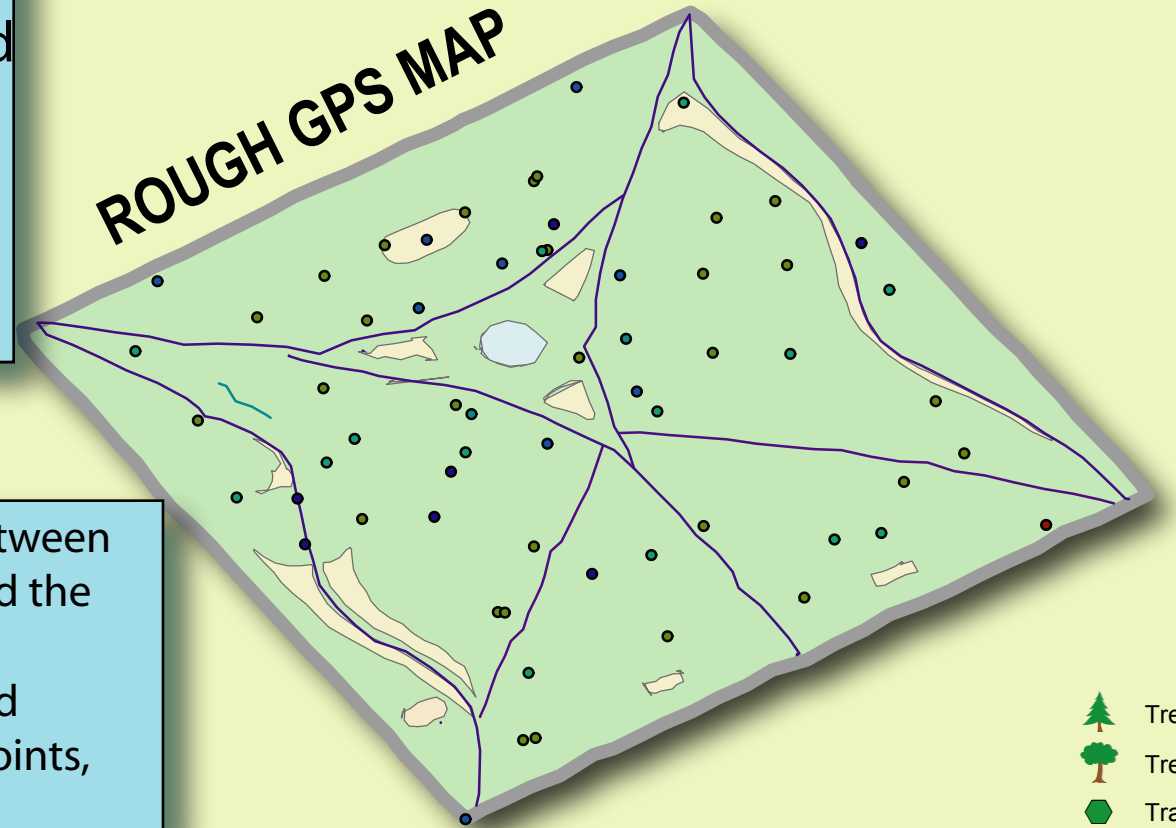
AERIAL MAP



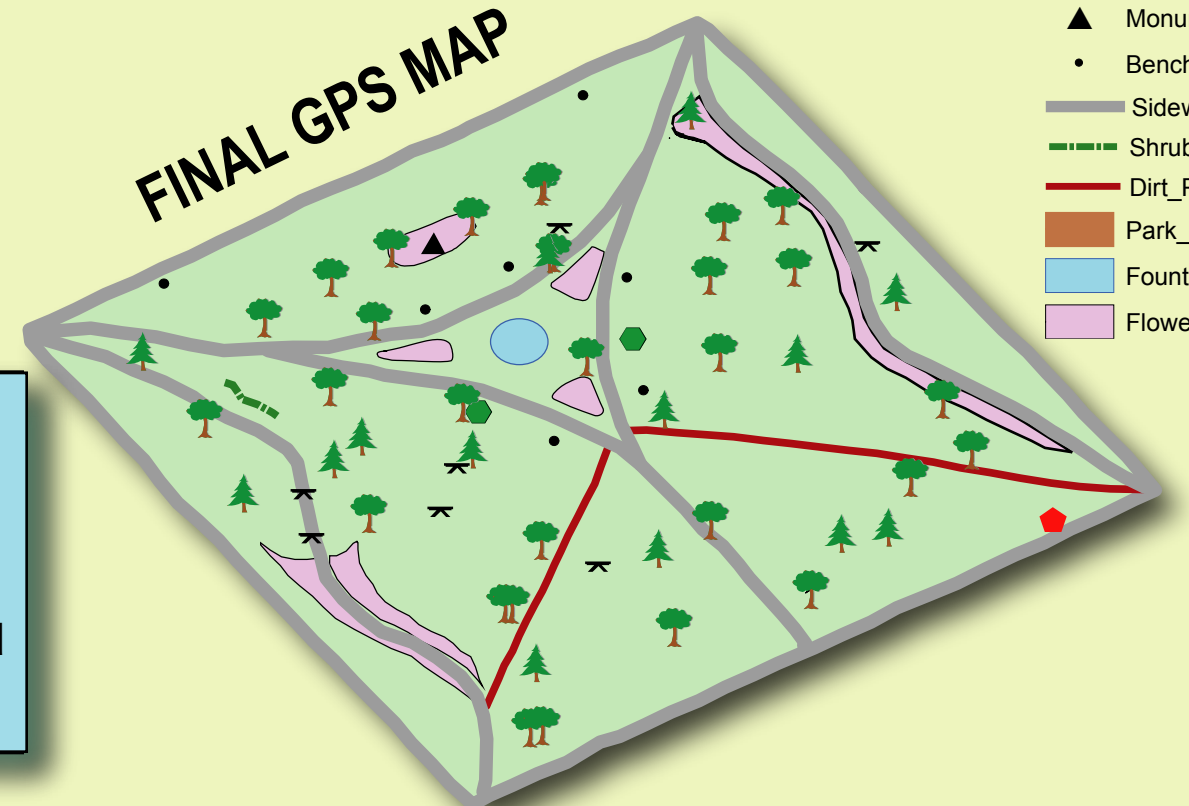
The difference between the initial map and the final map is symbolization, and clarity of lines, points, and areas.

The Aerial map exhibits rough GPS data . Points, lines and regions. were placed on the map in ArcMap. All of the information was then exported into Adobe Illustrator.

ROUGH GPS MAP



FINAL GPS MAP



- Tree_-40
- Tree_+40
- Trash_Ca
- Point_ge
- Picnic_T
- Monument
- Bench
- Sidewalk
- Shrub
- Dirt_Pat
- Park_Sig
- Fountain
- Flower_G