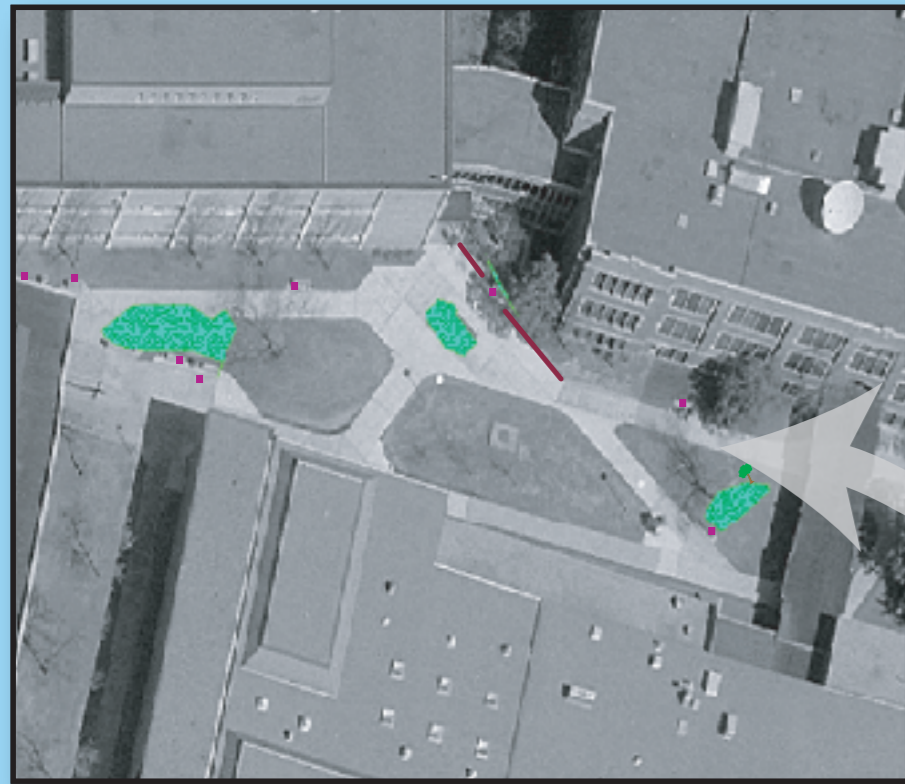
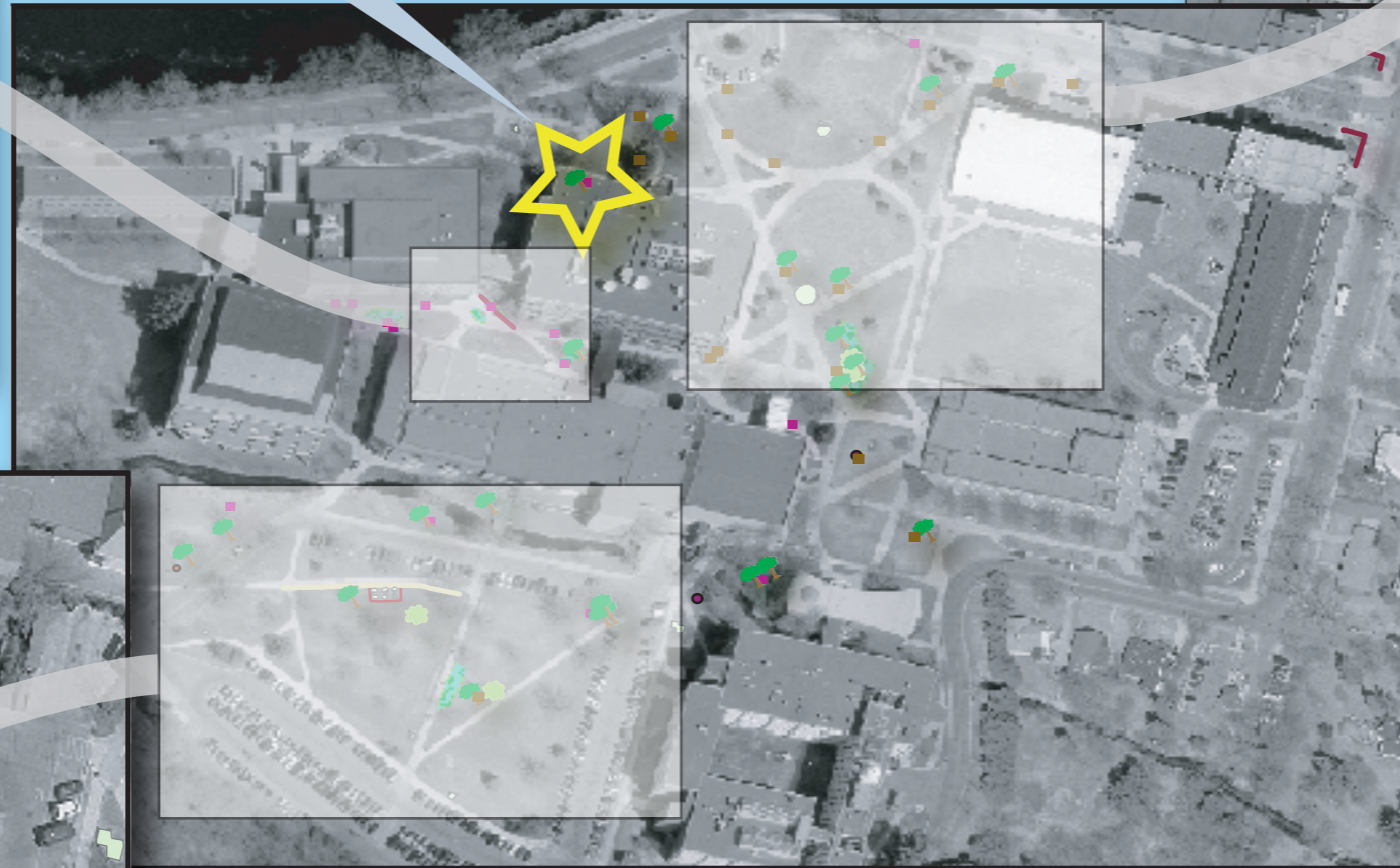
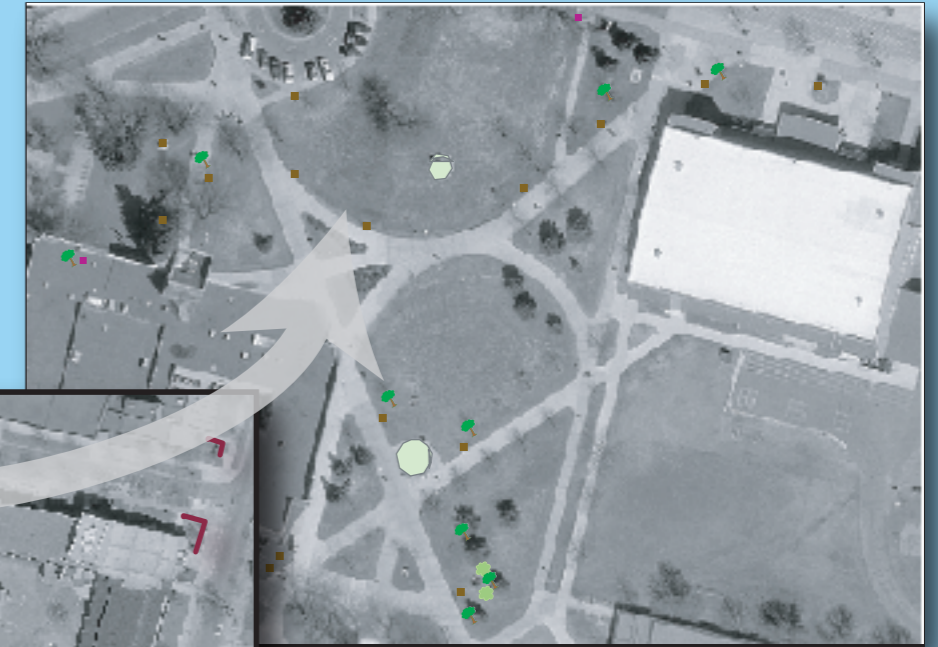


Places To "Take A Load Off" On Lower Campus



Trees and benches on the roof? This phenomena is called "parallax". The GPS unit takes the location from the ground, whereas the photograph of the campus was taken from the air. When the two are put together it looks as though the tree and bench are on the roof of the building, but in reality they are on the ground, close to the front of the building on the north side.



This poster represents the various places to sit and relax on the lower campus at UWEC. The information was initially gathered on a GPS unit and transferred to the Arc Map program where it was then overlain on an aerial photo map of the same area. While in the Arc Map program, we were able to change the various points, lines and areas to more recognizable symbols as seen on the map. The map was then exported to the Adobe Illustrator program where the main map was separated into smaller, localized areas of interest, allowing for more detail to be seen. It was also in Adobe Illustrator that shadows and directional arrows were added to help distinguish one map from another.



The raw data produced by the GPS unit is very hard to understand without a map of the same area to use as a reference point.

This Poster brought to you by:
Aaron Kent, Stephanie Schultz, and
Michele Shaw.