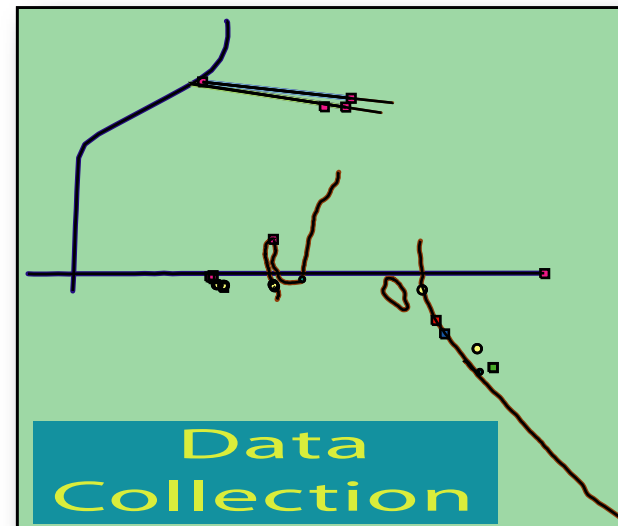
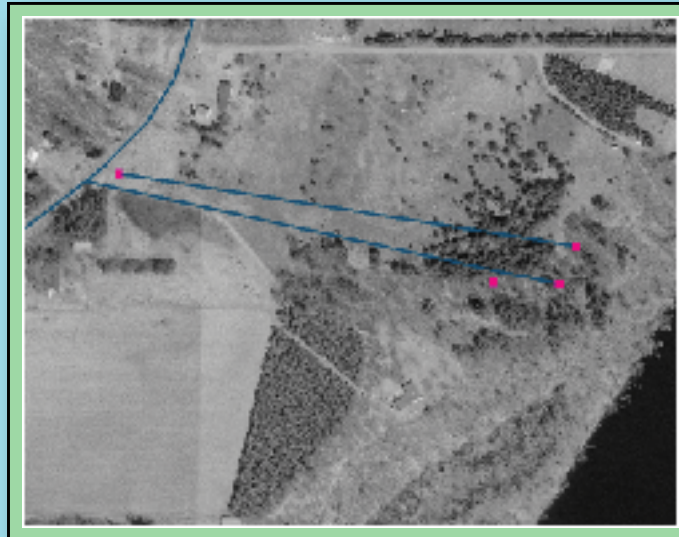


GPS Mapping of the Eau Claire County Line and Surrounding Area on the Chippewa River

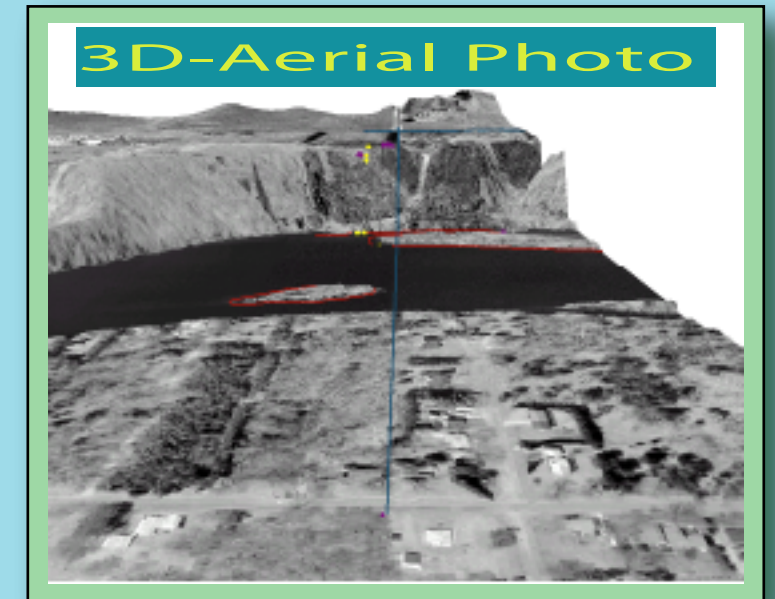
Insights into GPS and GIS

by Jesse Bernhardt and Willi Cheney

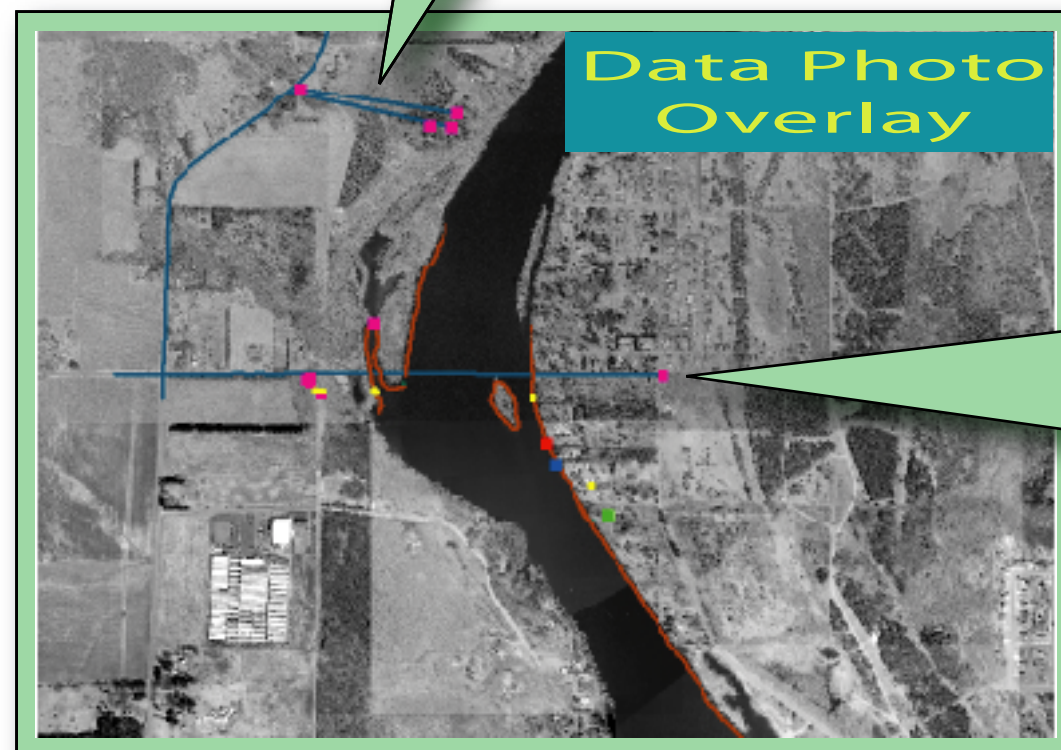
One aspect of this project was to assist a neighbor with a land dispute he was having. We took data points at two property stakes and one point where he thought the stake should have been (north east data point). He was given a copy of this map.



- Legend**
- Power Pole
 - Property Pin
 - Generic Point
 - Will's House
 - Mermaid's House
 - Johnson's House
 - Jim's Line
 - Jim's Neighbor's Line
 - Shoreline
 - Road Center Line
 - Property Line
 - Dock



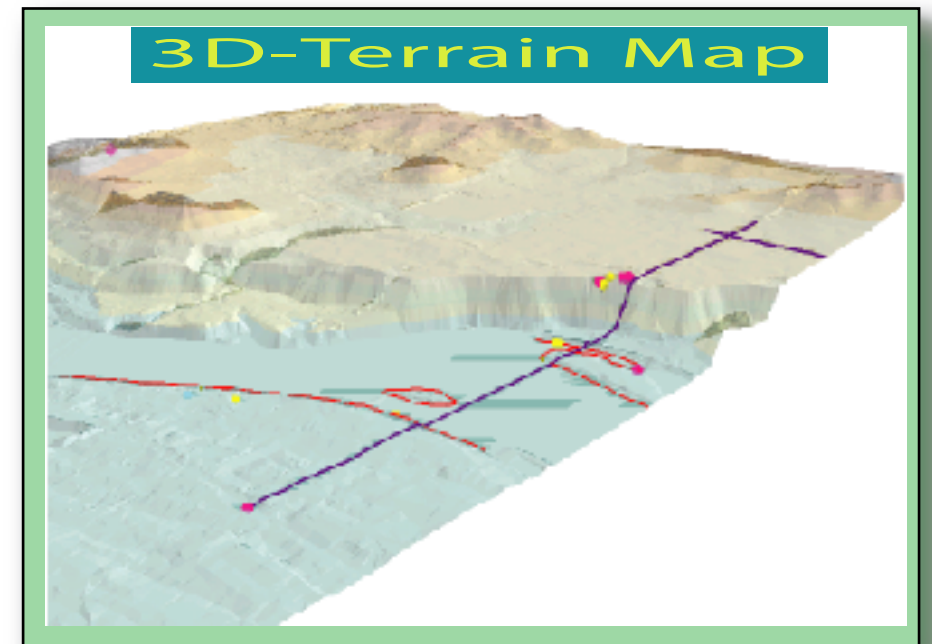
The GPS data was superimposed over an exaggerated elevation aerial photo map to show the extension of the county line over the Chippewa River to another known survey stake.



The GPS data was loaded into ArcMap GIS and combined with aerial photos to assist in the presentation of our data.



This map is zoomed in on a survey marker across the Chippewa River from the other survey markers. When the line was extended from the western side of the river it was a dead on match with a aerial photo marker on the east side of the river. The aerial photo marker is in close proximity with a survey marker.



This is another view of our GPS data superimposed over an exaggerated topo map. This gives an appreciation of the land surface which may be obscured when the aerial photos are added