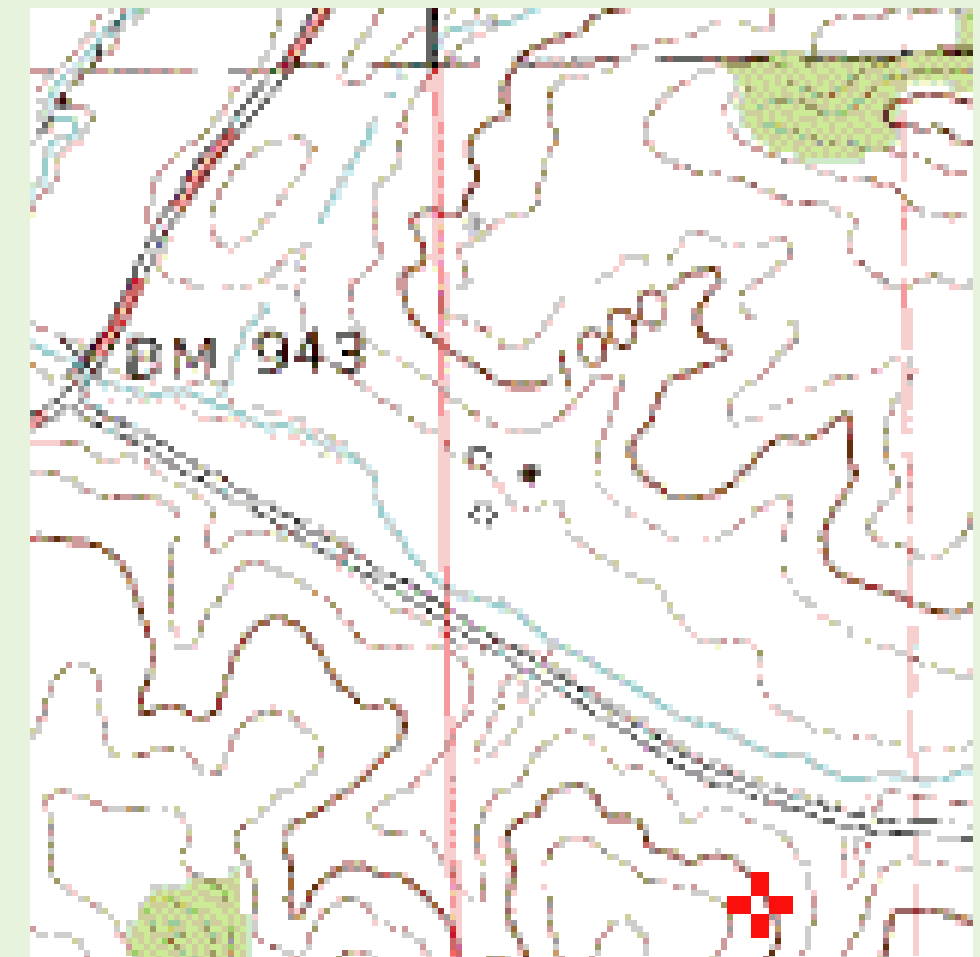


Team B.S. Takes You To Home Sweet Home-A Map of Bev's Property By Bev Caldwell and Sarah Remkus

For this project we mapped out part of Bev's property which is located at the corner of Holmen Rd and Cty Rd 0 just south of Osseo in Trempealeau County. We used the Trimble Pro XR unit to map points; such as trees and springs, lines were used to map the driveway and areas to map the different fields.



This farm is situated in a hilly area that has plenty of sky for excellent PDOP's, so there wasn't any problem collecting data. We went to Trempealeau County Land Records for the DOQ files for the aerial photo, then transferred them to Arc Map. This final version was created in Adobe Illustrator 10.



Left: GPS map
Top: Aerial Photo
Right: Topographic Map